

GARY SCHNEIDER *genetic self-portrait*



Photo: *HANDS*, 1997 – Gary Schneider

EXHIBITION TITLE: *genetic self-portrait*

EXHIBITION DATES: Nov. 13–Jan. 26, 2008

NEW GALLERY HOURS: Tuesday–Saturday noon–6 p.m.

ARTIST: Gary Schneider (South African-born, NYC-based)

RECEPTION: Nov. 15, 5–8p.m. at The Warehouse Gallery in
Downtown Syracuse, N.Y.

(Th3: The Third Thursday – A City Wide Arts Opening)

In the first solo exhibition at The Warehouse Gallery, artist Gary Schneider challenges the traditional definition of the portrait

The Warehouse Gallery opens its first solo exhibition on Nov. 13, with work by **GARY SCHNEIDER** titled *genetic self-portrait*. The exhibition will be on view through Jan. 26, 2008. A reception for the artist will be held from 5–8p.m. on Nov. 15 in conjunction with Th3: The Third Thursday—A City Wide Arts Opening.

The show includes 55 photo-based works that Schneider produced when he was offered a chance to create a new body of work inspired by the Human Genome Project (HGP). The HGP, a scientific race to uncover the mysteries of DNA, began formally in the 1990s and was completed in 2003. During that period, Schneider was able to collaborate with a number of scientists and was given access to advanced imaging systems from electron microscopes to x-ray machines.

The work in the exhibition ranges from images of his individual chromosomes made by a light microscope to panoramic dental x-rays. Schneider is known as a master photographic printer, and by combining his skill as a craftsman and selecting specimens for their aesthetic qualities, he moved beyond scientific descriptions to produce a personal portrait that asks us to consider how we are unique and where we stand on common ground.

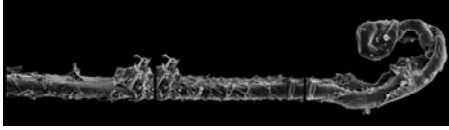
Schneider had always been interested in alternative imaging techniques, and previous to this project he had been making images by imprinting his hands onto film emulsions. When he decided to include these prints along with the images he had been making with scientists, he realized that what he had been creating was a new kind of portrait. Ann Thomas, curator of photographs at the National Gallery of Canada, described it as a new approach that “challenges the traditional definition of the portrait, and revises our understanding of what it means to be revealed before the camera’s lens.”

By merging scientific accuracy with poetic resonance, Schneider has created a very personal illumination of how our individual identity is so closely linked to our broader understanding and use of the information contained in the human building blocks of our DNA. Through the personal exploration that went into creating *genetic self-portrait*, Schneider reveals that while we may always want to think of ourselves as more than the sum of our parts, our real promise might be found in looking at the 99 percent of ourselves we have in common with everyone else.

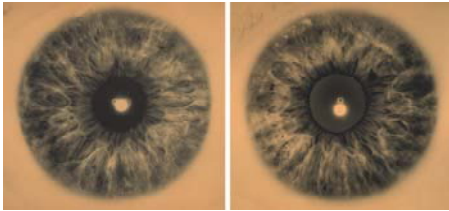
THE WAREHOUSE GALLERY

international contemporary art center
Syracuse University

SAMPLE WORKS



HAIR – “The hair was attached to a metal nub with double-sided tape. The nub and hair were then placed inside a vacuum chamber and coated with platinum. This plating conducts the electron beam when the specimen is scanned.”



IRISES – “A fundus camera is a 35-mm camera adapted to photograph the interior of the eye with a light source projected through the lens of the camera. I asked to use this camera to photograph my irises because the light source, seen here reflected off the lenses of my eyes, would interfere with the images of my irises.”

BASIC EXHIBITION INFORMATION:

Exhibition Title:	<i>genetic self-portrait</i>
Exhibition Dates and Times:	Nov. 13–January 26, 2008; Tuesday–Saturday, noon–6 p.m.
Admission Cost:	Free and open to the public
Scheduling Interviews, Tours:	Elaine Quick, programs coordinator press@thewarehousegallery.org, 315.443.6450
Artist's Name:	Gary Schneider
Artist Bio:	<p>Gary Schneider was born in South Africa in 1954. He received a B.F.A. from the University of Cape Town and an M.F.A. from Pratt Institute in New York. In the 1970s and 1980s, he worked in the theater of Richard Foreman and Robert Wilson, making films. Schneider has been exhibiting his photography since 1991. He completed his <i>genetic self-portrait</i> installation in 1998, and since then it has been exhibited across the United States, including at the Santa Barbara Museum of Art, Mass MoCA, and The International Center of Photography. The installation has also been exhibited internationally and continues to travel. In 1999, <i>genetic self-portrait</i> was published in book form by Light Work, and in 2000 the work received an Eisenstadt award.</p> <p>Schneider's work has been exhibited internationally, and recent exhibition venues include the Sackler Museum at Harvard College in Boston and the National Portrait Gallery of Scotland. A major retrospective of his work will open at the Museum of Photographic Arts in San Diego in 2008. Schneider's photographs are included in the permanent collections at The Whitney Museum, The Guggenheim Museum and The Metropolitan Museum in New York City; The National Gallery of Canada; The Musée de L'Elysée in Lausanne, Switzerland; The Museum of Fine Arts in Boston; and The Art Institute of Chicago.</p>
Store Item:	<p>Accompanying the exhibition is <i>genetic self-portrait</i> (Light Work, 1999). Hardbound, fully-illustrated catalog. SALE PRICE FOR THE DURATION OF THE EXHIBITION \$20 - Suggested Donation</p>
About The Warehouse Gallery:	<p>The Warehouse Gallery is an international contemporary art venue of the SU Art Galleries at Syracuse University. The gallery's mission is to present exhibitions and programs by artists whose work engages the community in a dialogue regarding the role the arts can play in illuminating critical issues of our life and times.</p>

